



Cheselbourne Village School
Cheselbourne
Dorchester
Dorset
DT2 7NT
office@cheselbourne.dorset.sch.uk
01258 837306



Friday 22nd January 2021



Weekly Note from Mrs See...

WELL DONE once again to everyone for another super week of School at Home.

We've really appreciated everyone continuing to persevere with us getting to grips with all the features of Google Classroom, particularly in Y3/4 where we've been setting assignments this week. Mrs Collett has sent information to all our Kingfisher parents about uploading work and handing in assignments which we hope you'll find useful. We will be continuing with this next week as it is a great way for us to keep track of work being achieved and be able to provide feedback.

Please keep sharing the work that the children complete at home, we love to see what has been achieved and this also helps us plan for the children's next weekly plan.

Events for this term:

We have been thrilled with the engagement online and so we'd like to host a couple of fun, social events for everyone at home:

- Next Wednesday 27th January *Virtual Books at Bedtime*
- Thursday 11th February - *Virtual Family Quiz and Games Night*

Please look out for invites and links to these events which will be sent next week.

INSET Day - please note the last day of this half term will be Thursday 11th February as staff will be on a staff training day on Friday 12th February. There will be no School at Home set for that day.

Staff COVID Testing - in a bid to help further stop the spread of Coronavirus, the DfE have set up testing for all primary school and nursery staff. Below is some information about the regular

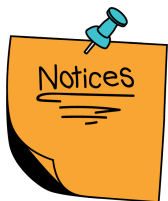


Cheselbourne Village School
 Cheselbourne
 Dorchester
 Dorset
 DT2 7NT
office@cheselbourne.dorset.sch.uk
 01258 837306



testing of school staff which is due to begin next week. From Monday 25th January we will be beginning our asymptomatic Covid-19 testing in school. Along with the other protective measures we are taking, testing will allow us to take further measures to keep our school as safe an environment as possible. Up to one in three people who have Covid-19 have the virus without symptoms so could be transmitting the virus unknowingly. Tackling the pandemic requires identifying asymptomatic, infectious individuals. By testing, we will help to reduce the spread in schools. Staff participating will test at home twice a week, using Lateral Flow Device (LFD) tests which have been widely and successfully used to detect COVID-19 in asymptomatic individuals. No test is perfect, but the speed and convenience of LFD tests supports detection of the virus in asymptomatic individuals who would not otherwise be tested. If a positive test result is received, staff will book a PCR test and the bubble they will work in will be closed until the results of the PCR test, if this test is also positive then the bubble will remain closed with all children/close contacts needing to isolate for 10 days (from the initial test), if it is negative the bubble will reopen. If a bubble does need to be closed we will contact you with as much notice as possible with more information.

Have a lovely weekend!
 Mrs See



Fruit and Veg Snack "1 ZVgZ'cdl gZk'k'e\`adi hd[[gj 1 VcYkZ [gdb i] Z'9[: t hcVX hX] Zb ZV\ V'e hd'ndj cd'atc\ZgcZZY id'hZcY'1 Zb h'c [dghcVX i' b Z# EgZ'HX] ddaVcYVcnXg'1 X'Val dg ZgX] 'a'gZc1 'aa] VkZVc Vb eaZ'hj ean'd[t [gj 1 dgkZ hcVX hi] Zc i] Zn gZ'c hX] dda# tt



9dc i [dgZi/1 ZVgZV'hd'gZ\ 'hi ZgZY1 1] t ZVm[j cYgV'h'e\ VcY\ kZc i] Vi 1 'ha' Zan i] Vi b dgZ'h] dee'e\ 1 'aa] VeeZc'dcatcZ' ZVX] t d[ndj gidcatcZ'ej gX] VhZhXoj a'] Zae'gV'hZ'b dcZn [dgi] Z'hX] dda#EaZVhZ\di di] Zt [2](http://ZVm[j cYgV'h'e\ 1 ZVhZ [dgj dgZ'c [dgb Vi 'dc#] Vc` ndj 't</p>
</div>
<div data-bbox=)



Cheselbourne Village School
Cheselbourne
Dorchester
Dorset
DT2 7NT
office@cheselbourne.dorset.sch.uk
01258 837306



Headteacher:
Mrs Mary See

t

HM[Z\j VgY'c\ H] eedgj tt
x'ndj ZkZg] VkJVXdcXZgc Wtdj i V'X] 'a!'eaZVhZ'Xdc i V'X] dj g'9Zh^cVi ZYt
HM[Z\j VgY'c\ 'AZVY''B gh^HZtt
Dg'c'i] Z'WwZcXZ'd[B gh^HZ'heZV' id'dj gYZej in'9Zh^cVi ZYt
HM[Z\j VgY'c\ 'AZVY''B gh^8daZi i #

Celebration Awards for this week...

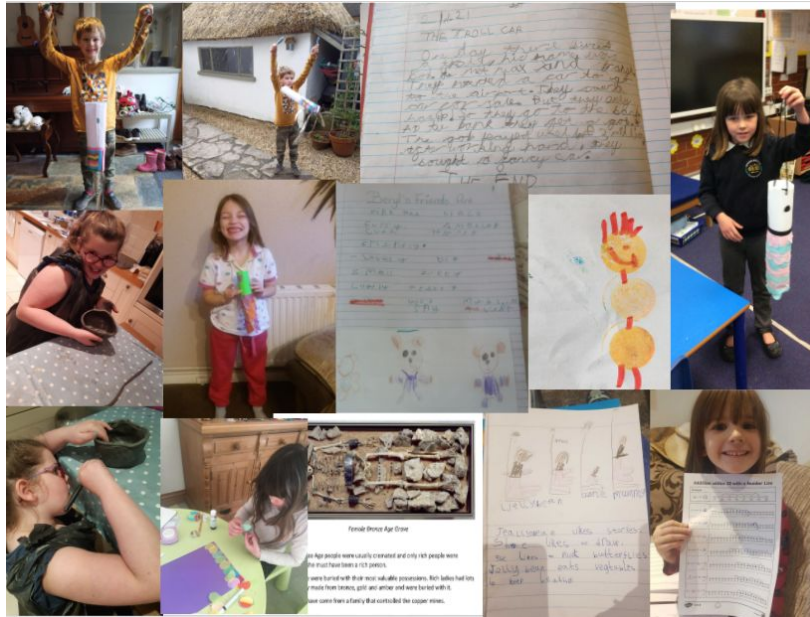
Well done to our superstars this week:



Please see below for our Gallery of super SAH work...

**CVS Weekly News
and Celebration Letter**

Cheselbourne Village School
Cheselbourne
Dorchester
Dorset
DT2 7NT
office@cheselbourne.dorset.sch.uk
01258 837306



BRONZE AGE WARRIOR

His battle axe over one shoulder, he walked onto the battlefield. He was terrifying. His weapons and armour were of leather, bronze and flint. His arrows were thick flint tipped killing machines with a feather on one end. His axe was used as it was bronze headed with an oakwood handle. The spear was the only thing I was truly afraid of, or very afraid of, with its bronze and flint tip on a cedar shaft.

Task 1 - Protection
Label and colour in the bones that protect organs in your body.

Task 2 - Support
Label and colour in the bones that keep your body upright.

Task 3 - Joints
Circle a key below and then draw in the joints in the body.

| type of joint | picture | colour |
|-----------------|---------|--------|
| Ball and Socket | | green |
| Hinge | | blue |
| Ball and Socket | | red |



Cheselbourne Village School
Cheselbourne
Dorchester
Dorset
DT2 7NT
office@cheselbourne.dorset.sch.uk
01258 837306



2020-21 Term Dates

SPRING TERM 2021

Monday 4th January - Children return for Spring Term 2021

(Friday 12th February - INSET DAY 5 (School closed for children))

SPRING HALF TERM - Monday 15th - Friday 19th February

Monday 22nd February - start of second half of Spring Term

Thursday 1st April - Last day of Spring Term

EASTER HOLIDAY - Friday 2nd April - Friday 16th April

SUMMER TERM 2021

Monday 19th April - Children return for Summer Term 2021

(Monday 3rd May - May Bank Holiday 2021)

SUMMER HALF TERM - Monday 31st May - Friday 4th June 2021

Monday 7th June - start of second half of Summer Term

Friday 23rd July - Last day of Summer Term

SUMMER HOLIDAYS

